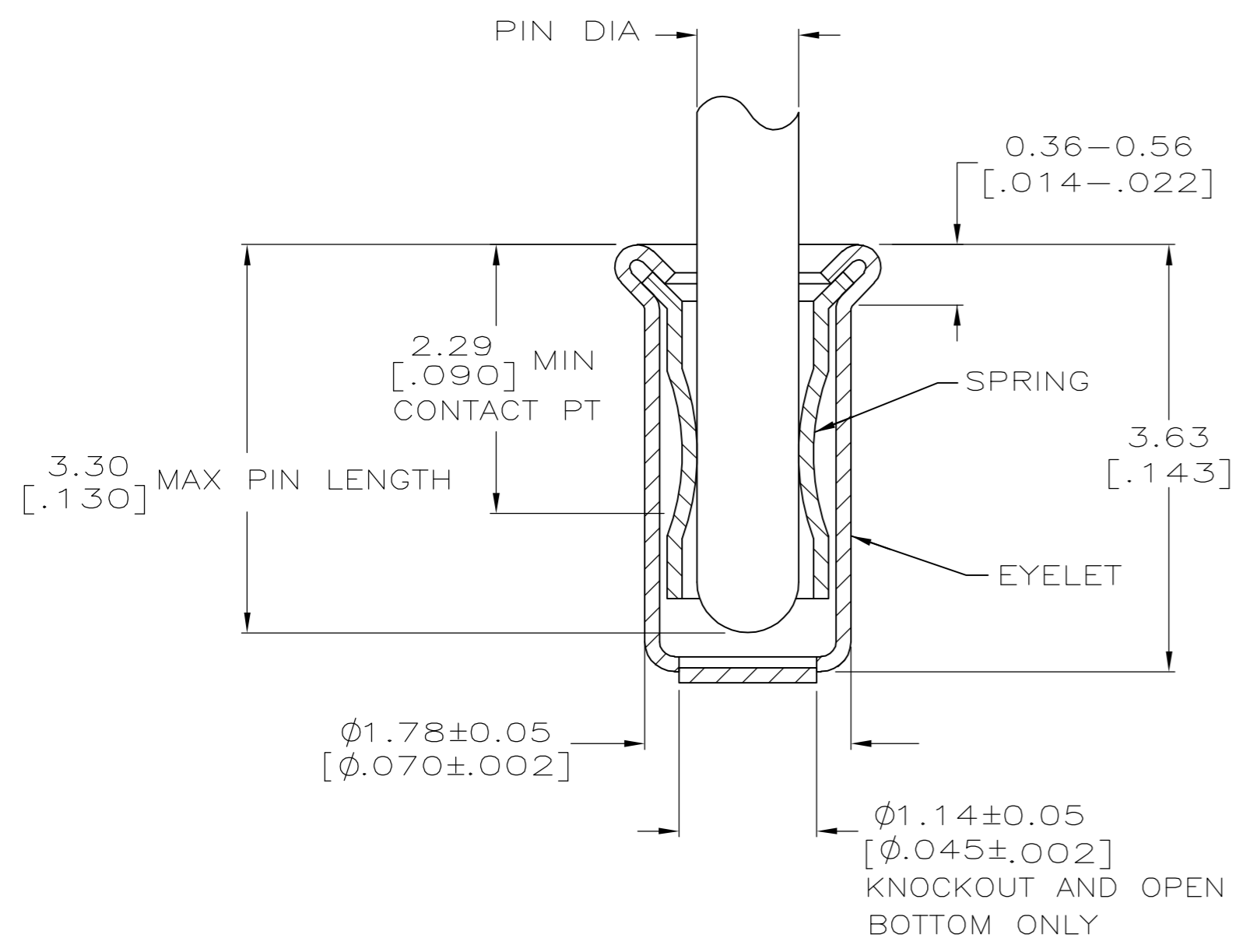
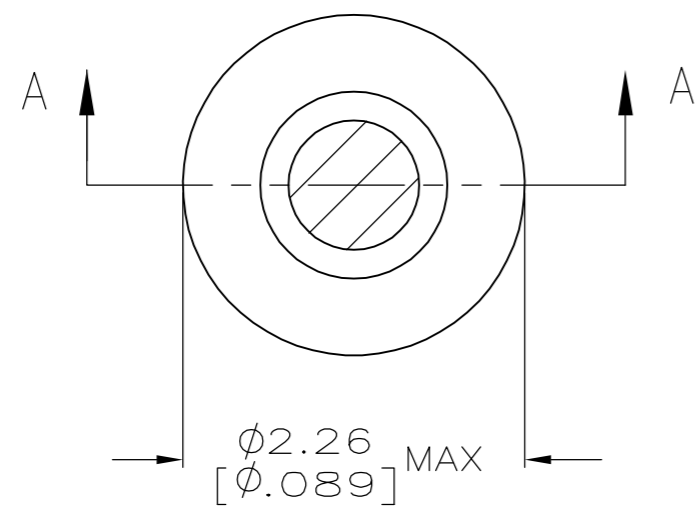


THIS DRAWING IS UNPUBLISHED. RELEASED FOR PUBLICATION
 © COPYRIGHT BY TYCO ELECTRONICS CORPORATION. ALL RIGHTS RESERVED.

LOC	DIST	REVISIONS			
P	LTR	DESCRIPTION	DATE	DWN	APVD
FT	64				
	01	REVISED PER ECO-05-013685	14FEB06	JDP	JGH



SECTION A-A

- 1. TIN PLATE PER ASTM B 545 0.00254 [.000100] MIN THICK.
- 2. GOLD PLATE PER ASTM B 488, 0.00076 [.000030] MIN THICK OVER NICKEL PLATE PER QQ-N-290 0.00028 [.000011] MIN THICK ON CONTACT AREA.
- 3. RECOMMENDED HOLE SIZE, PLATED OR UNPLATED:
 - MACHINE INSERTION: $1.83^{+0.10}_{-0.08}$ [.072 $^{+0.004}_{-0.003}$]
 - HAND INSERTION: $1.83^{+0.10}_{-0.00}$ [.072 $^{+0.004}_{-0.000}$]
- 4. APPLICATION TOOL PART NUMBER: MACHINE NO. 682127-5
INSERTION HEAD NO. 682039-4
- 5. TO INSURE PROPER SPRING TENSION DO NOT EXCEED A 0.05 [.002] DIFFERENCE IN PIN DIA WHEN CHANGING TO A SMALLER PIN.
- 6. BOTTOM PLUG KNOCKOUT TOOL PART NUMBER 69729 WITH TIP PART NUMBER 69728-2.
- 7. MATERIAL:
 - SPRING: BERYLLIUM COPPER PER ASTM B 194
 - EYELET: COPPER PER ASTM B 152

OBSOLETE

TYPE	RECOMMENDED PIN DIA	FINISH	PART NO	
OPEN	0.71-0.84 [.028-.033]	TIN 1	4-5332070-4	
KNOCKOUT	0.94-1.02 [.037-.040]		GOLD 2	3-5332070-5
OPEN	0.94-1.02 [.037-.040]	TIN 1	2-5332070-9	
	0.86-0.94 [.034-.037]		TIN 1	2-5332070-8
	0.76-0.84 [.030-.033]		GOLD 2	2-5332070-6
CLOSED	0.94-1.02 [.037-.040]	TIN 1	GOLD 2	2-5332070-5
	0.86-0.94 [.034-.037]		TIN 1	2-5332070-3
BOTTOM TYPE	RECOMMENDED PIN DIA	EYELET	TIN 1	2-5332070-2
			GOLD 2	2-5332070-1

THIS DRAWING IS A CONTROLLED DOCUMENT.		DWN A. FERNANDEZ-DOCK5 22APR2005	Tyco Electronics Corporation Harrisburg, PA 17105-3608	
DIMENSIONS: mm [INCHES]	TOLERANCES UNLESS OTHERWISE SPECIFIED:	CHK J. HAVENER 22APR2005	NAME MINIATURE SPRING SOCKET ASSEMBLY SERIES 4	
	0 PLC ± -	APVD J. HAVENER 22APR2005	PRODUCT SPEC 108-14008	SIZE A2
	1 PLC ± -		APPLICATION SPEC 114-13152	CAGE CODE 00779
MATERIAL	FINISH		WEIGHT -	DRAWING NO C=5332070
1	SEE TABLE		CUSTOMER DRAWING	RESTRICTED TO -
			SCALE 20:1	SHEET 1 of 1
			REV 01	

5332070

A